



**Farm Machinery Testing, Training and
Demonstration Centre**
Department of Farm Machinery and Power Engineering,
College of Agricultural Engineering, JNKVV, Jabalpur, M.P.
Phone and Fax: (0761) 2681415, Email: jnkvvtesting@gmail.com



SPECIFICATION SHEET OF TRACTOR OPERATED ROTAVATOR

1.0	General	:	
	Name	:	
	Type	:	
	Make	:	
	Serial Number	:	
	Model	:	
	Year of manufacture	:	
	Name and address of manufacture	:	
	Source of power	:	
	Recommended power of tractor, if tractor operated	:	
	Selling price in India	:	

2.1	Main frame / Chassis:		
	a)	Type and material	:
	b)	Size of box section(mm)	:
	c)	Size of supporting flat (mm)	:
	d)	Type of mounting box section	:
2.2	Side support / plates:		
	a)	Number and material	:
	b)	Thickness of plate (mm)	:
	c)	Size (mm)	:
		LHS	:
		RHS	:
	d)	Method of fixing	:
2.3	Shield (cover):		
	a)	Type	:
	b)	Size (mm)	:
	c)	Thickness of sheet (mm)	:
	d)	Method of mounting	:
2.4	Trailing board:		
	a)	Type and material	:
	b)	Size of board (mm)	:
	c)	Type and number of hinge	:
	d)	Angle of trailing board	:
	e)	Provision for locking	:
	f)	Method of fixing	:
2.5	Rotor shaft:		
	a)	Material	:
	b)	Type and size (mm) of rotor axle	:
	c)	No. and type of flanges	:
	d)	Size (mm) of flanges	:
	e)	No. of blades on each flange	:
	f)	Total No. of blades	:
	g)	Method of mounting blades on flange	:
	h)	Distance between two flanges	:

		(mm)		
	i)	Dia. of rotor with blades (mm)	:	
	j)	Method of fixing	:	
2.6	Rotor blade			
	a)	Number and Type	:	
	b)	Material	:	
	c)	Size (cm)	:	
	d)	Thickness (mm)	:	
		Overall	:	
		Beveled edge	:	
	e)	Length and width of beveled edge (mm)	:	
	f)	No., size and spacing of the holes on each blade for fixing it to the flanges (mm)	:	
	g)	Arrangement of blades on the axle		
2.7	Depth control mechanism:			
2.7.1	Skid:			
	a)	No., Type and material	:	
	b)	Size (mm)	:	
	c)	Method of fixing	:	
2.7.2	Adjusting rack:			
	a)	No., Type and material	:	
	b)	Size (mm)	:	
	c)	Method of mounting	:	
	d)	Range of depth adjustment (mm)		
2.8	Type of hitch and its details :			
	a)	Type and material	:	
	b)	Shape	:	
	c)	Size (mm)		

Specification of Hitch Pyramid As per IS: 4468-2001 (Part-I)

Sr.	Dimension (Refer Fig.1)	Description	Measurement
Upper Hitch attachments			
1	d_1	Diameter of hitch pin hole	
2	b'_1	Width between inner faces of yoke	
3	b'_2	Width between outer faces of yoke	
Lower hitch points			
4	D_2	Dia. of hitch pin	
5	b'_3	Linch pin hole distance	
6	l	Lower hitch point span	
Other dimensions			
	Diameter of linch pin hole		
7	d	For upper hitch pin	
8		For lower hitch pin	
9	h	Mast height	

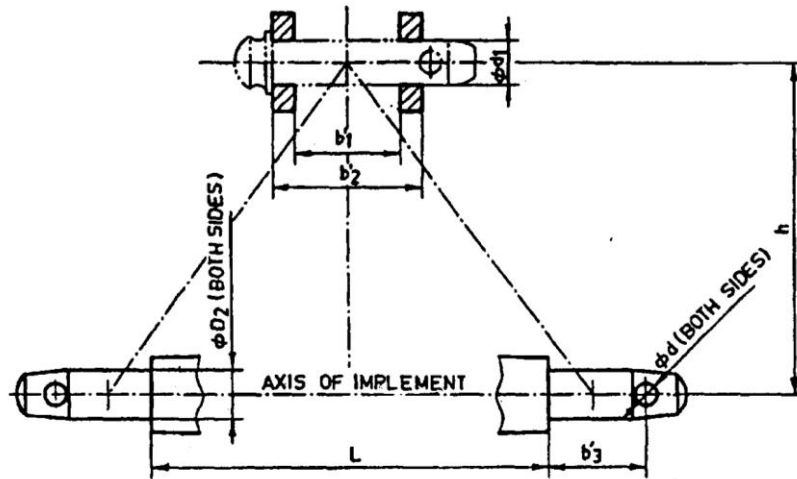


Fig. 1 : Implement Hitch Attachment

2.9	Power transmission system:		
	a)	Method of transmission	:
2.9.1	Spline end of rotavator input shaft:		
	a)	PTO Type 1/2/3	:
	b)	Nominal speed (rpm)	:
	c)	Nominal dia.(mm)	:
	d)	Number and type of splines	:

Dimension of Implement Power Input Shaft As per IS: 4931-2006

Specification/ Notations (Refer Fig.2)	Measurement Dimensions (mm)
D Φ	
d Φ	
B Φ	
A Φ	
W	
a	
b	
c	
x	
B	
h	

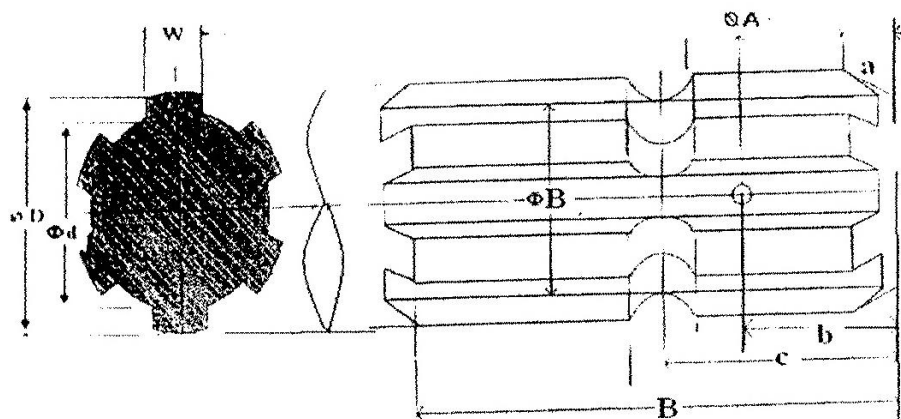


Fig. 2 Dimension of Implement Power Input Shaft

2.9.2	Gear box assembly (primary reduction):		
	a)	Type	:
	b)	No. of teeth on pinion	:
	c)	No. of teeth on bevel gear	:
	d)	Reduction ratio at gear box	:
	e)	Oil capacity (L)	:
	f)	Oil change period (hr)	:
	g)	Recommended grade of oil	:
	h)	Length of power transmission shaft (mm) (from gear box to secondary reduction unit)	:
	i)	Diameter of shaft (mm)	:
	j)	Provision of breather	:
	k)	No. of bearing	:
2.9.3	Gear box assembly (secondary reduction):		
	a)	Type	:
	b)	No. of teeth on drive gear	:
	c)	No. of teeth on driven gear	:
	d)	Reduction ratio	:
	e)	No. of teeth on idler gear	:
	f)	Oil capacity (L)	:
	g)	Oil change period (hrs.)	:
	h)	No. of bearing	:
2.9.4	Propeller shaft:		
	a)	Type and material	:
	b)	Length of shaft (mm)	:
		Minimum	:
		Maximum	:
	c)	Mass of shaft (kg)	:
	d)	Provision for locking	:

Propeller Shaft Insert Dimensions As per IS: 4931-2006

Sr.	Notations (Refer Fig.3)	
1	D Φ	
2	d Φ	
3	W	
4	B	

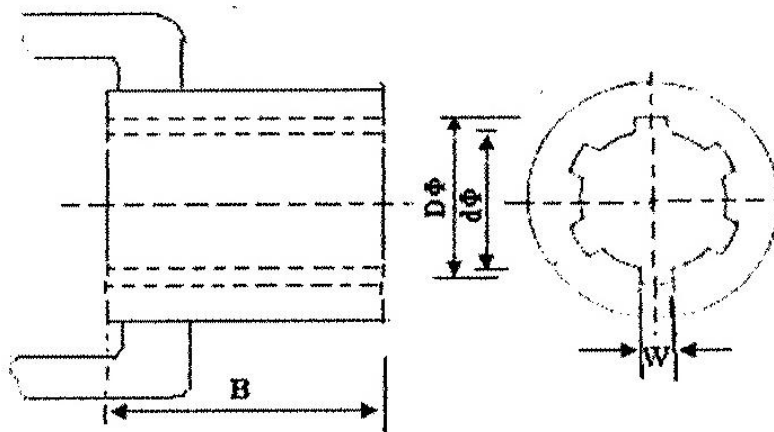


Fig. 3 : Propeller Shaft Insert Dimensions

2.9.5	Safety clutch/device:			
	Size of bolt(mm) :		:	
	a)	Length	:	
	b)	Dia.	:	
	c)	Pitch	:	
3.0	Overall Dimensions (mm)			
	a)	Length	:	
	b)	Width	:	
	c)	Height	:	
	d)	Mass, (kg)	:	
4.0	Color of implement			

5.0 Details of Material of Construction :

Sr.	Name of part	Material	Section or size in mm
1	2	3	4
1	Chassis		
2	Side support		
3	Shield (cover)		
4	Trailing board		
5	Rotor shaft		
6	Rotor blade		
7	Skid		
8	Adjusting rack		

Place:

Date:

Signature : _____

Name : _____

Designation: _____